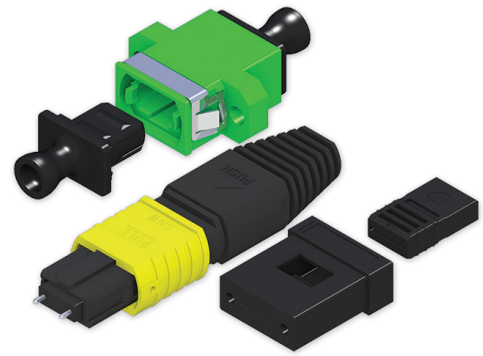


# MPO Series

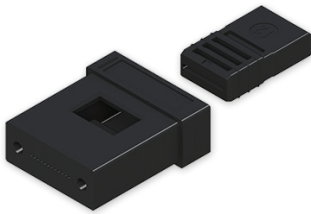
## For Multi-Fiber Connections



The latest MPO Series by Sanwa offers unmatched high-precision optical performance and stability. Our broad line of passive fiber optic components incorporate the industry's newest injection molding technology and state-of-the-art assembly and test procedures to ensure the highest level of product quality.



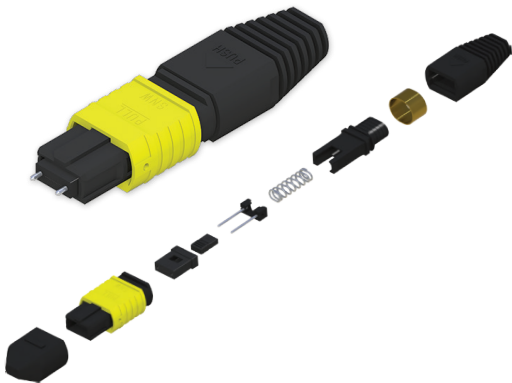
\*See chart for individual product details



### MT Ferrules

Dependable multi-fiber ferrules for high precision and exceptional stability.

- Standard or high grade SM/MM models
- Available in 12 SM/MM, 24 MM-fiber types & 12 SM high grade and 24 SM under development



### MPO Connector Kits

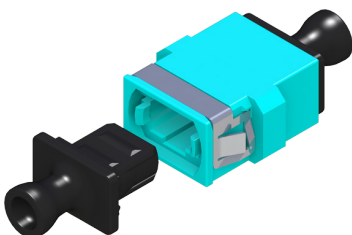
A full selection of types and models for advanced mechanical and optical performance.

- Male and female connectors available
- Standard or high-grade SM/MM models

### MPO Adapters

Cross key and straight key adapters ideal for high-density packaging applications.

- Available in standard screw-mount and short flange models



## Standards/Compliances at a Glance

	TIA/EIA,IEC& GR-1435-CORE	RoHS & REACH	Flammability rating: UL 94V-0
• MT Ferrules	✓	✓	✓
• MPO Connector Kits	✓	✓	✓
• MPO Adapters	✓	✓	✓

## Mode and grade/Insertion Loss and Return Loss Data

• SS (Single-Mode Standard);	IL=0.75dB or less (Typical; 0.25dB)	RL=60dB or more
• SH (Single-Mode High Grade);	IL=0.35dB or less (Typical; 0.1dB)	RL=60dB or more
• MS (Multi-Mode Standard);	IL=0.60dB or less (Typical; 0.2dB)	RL=20dB or more
• MH (Multi-Mode High Grade);	IL=0.35dB or less (Typical; 0.1dB)	RL=20dB or more

### The Sanwa Product Line

LC Series • SC Series • MU Series • FC Series • FTTx • MPO Series

## Engineering Excellence Connecting You and Beyond

Since 1947, Sanwa Denki Kogyo Co., Ltd., headquartered in Tokyo, Japan has been dedicated to develop, manufacture and market wide range of innovative connectivity solutions to meet the expectations of our customers.

With communication networks evolving to facilitate groundbreaking technologies such as AI (artificial intelligence), IoT (internet of Things), and big data, Sanwa will strive to provide and support the successful establishment of advanced information networks.



SANWA Electronics USA Corporation

Phone: +1-972-503-3031 • Fax: +1-972-503-3032  
4012 Preston Rd., Suite 200 • Plano, TX 75093 USA

www.sanwa-us.com mkt@sanwa-us.com